

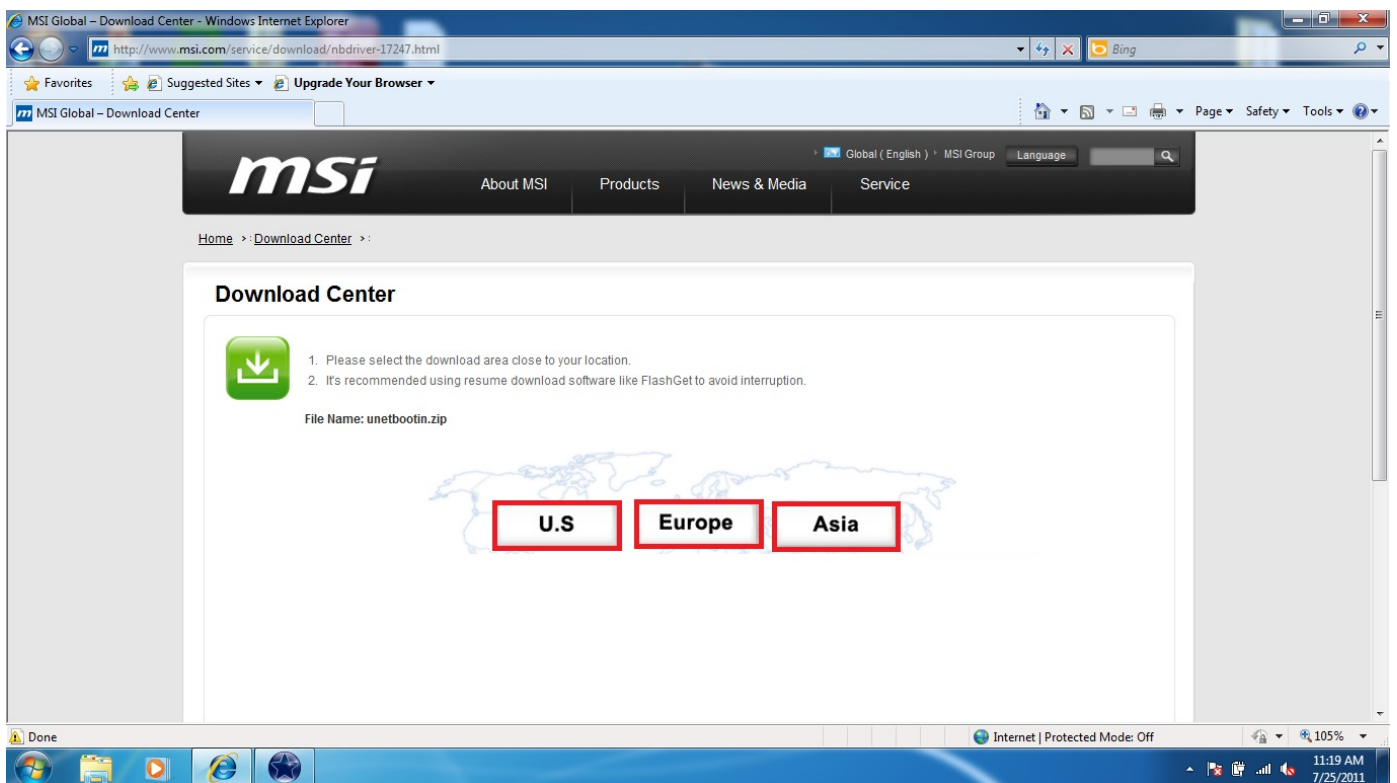
How to make a bootable flash disk and to flash EC

Tools to prepare:

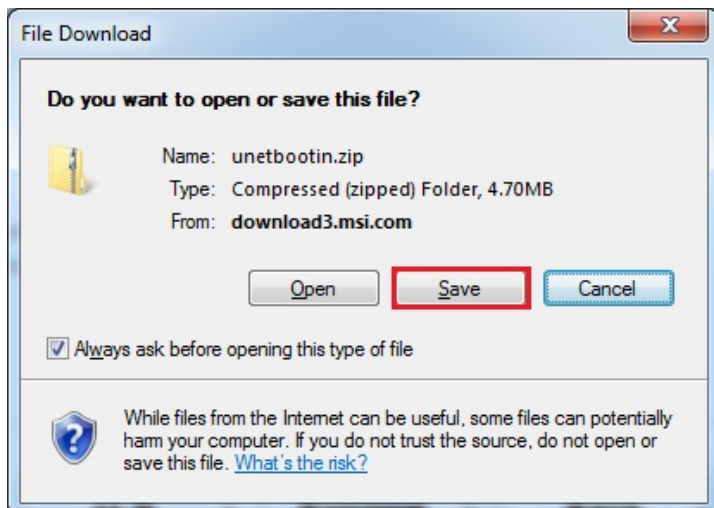
1. Flash Disk (It is strongly recommended to use usb flash drive less than 512M for better compatibility)
2. NB or PC which can connect to the Internet

Procedures:

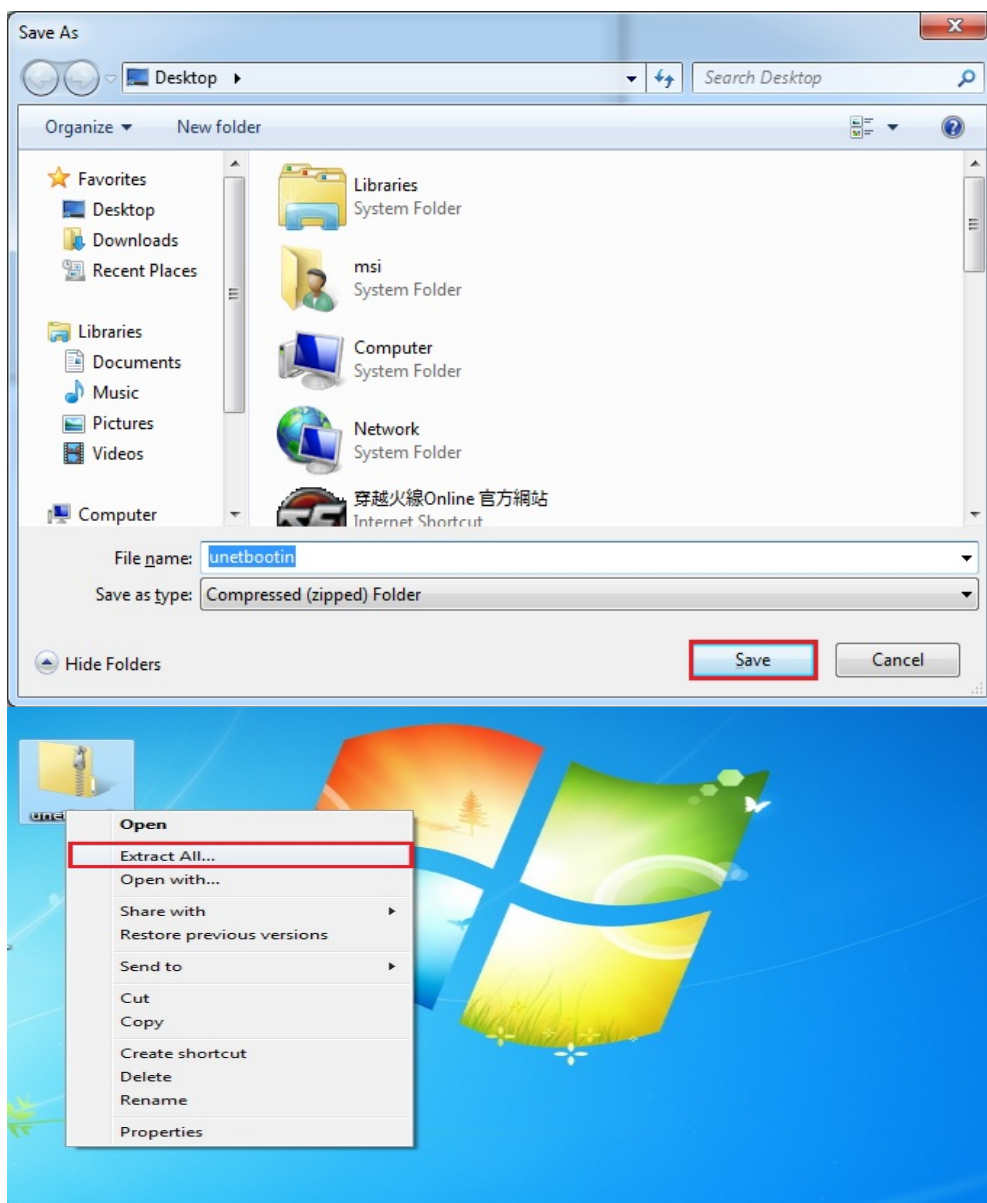
1. Connect the NB to the Internet, and then download the file from the link given below:
<http://www.msi.com/service/download/nbdriver-17247.html>



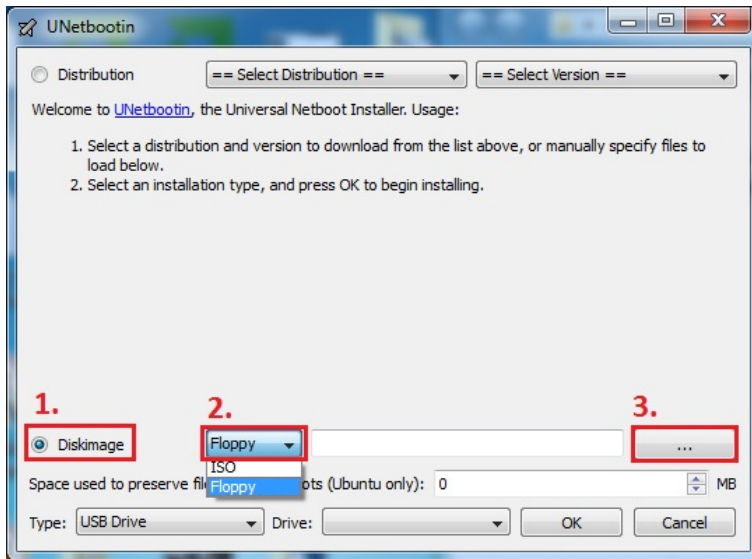
2. Press “Save”.



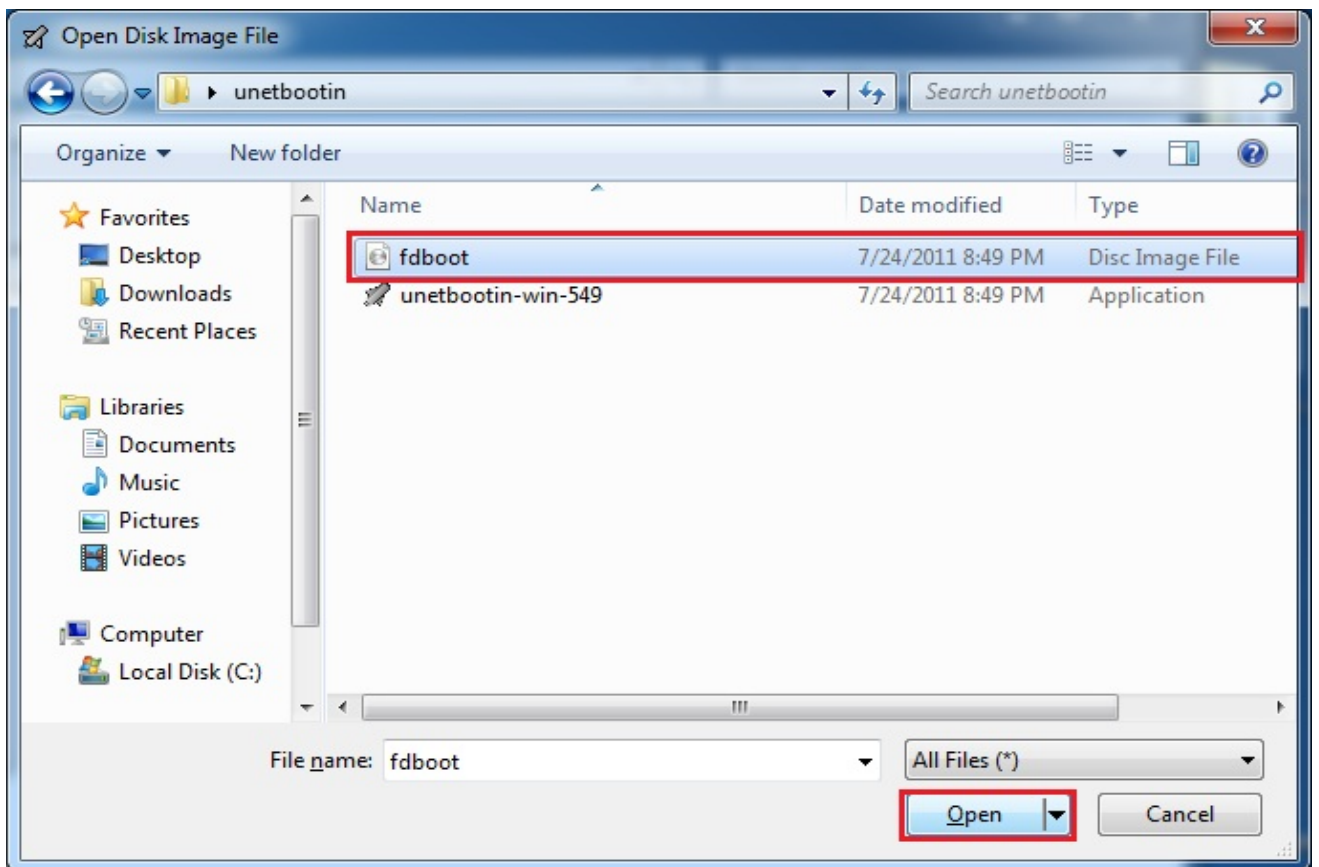
3. After pressing “Save”, save the file on the desktop and then extract the zip file.



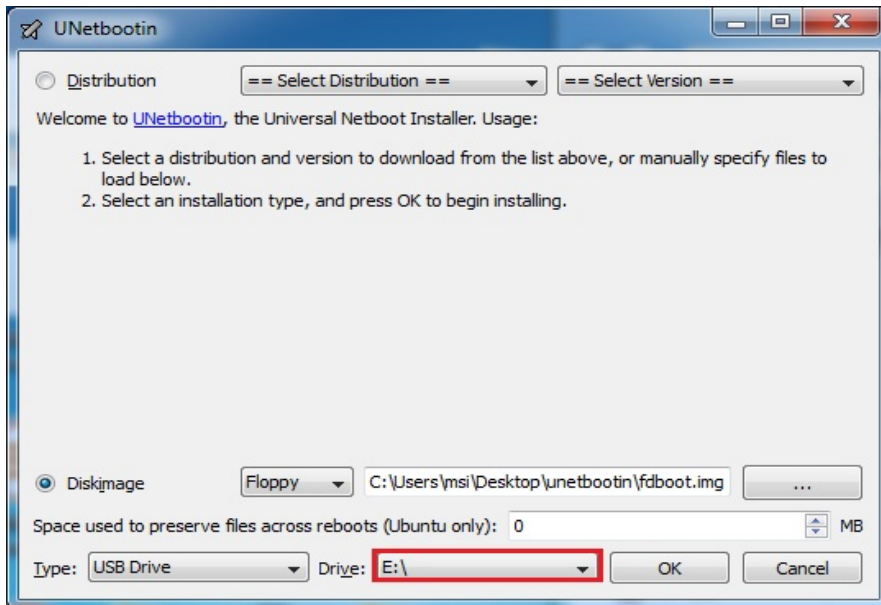
4. Extract the exe file and then select “Diskimage” and “Floppy” and browser.



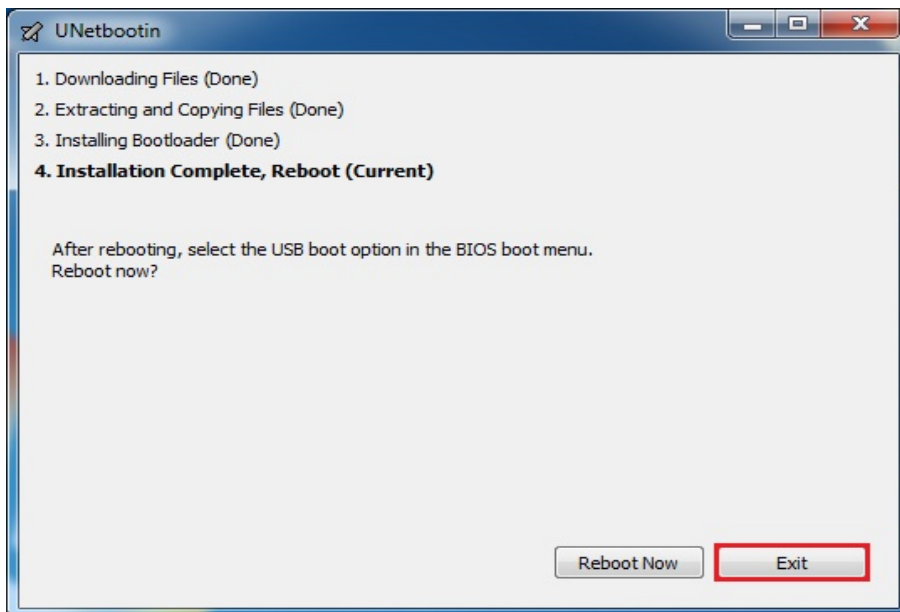
5. Select “fdboot” and press” open”.



6. Confirm whether the drive corresponds to the USB flash disk. If correct, press "OK" directly.



7. Press "Exit" to exit system. Now, have you bootable flashdrive.



8. Open web browser, connect to MSI official website and download the corresponding EC.



Firmware

Special Note:

The DEVICE FIRMWARES contained here are exclusively for MSI product only. MSI assumes no responsibility for any damages resulting from improper use or lack of technical expertise.

We suggest using Chrome, Firefox 3.0 or IE 8.0 above browsers to download BIOS, Drivers, etc.

Attention:

Users who download EC from here (not using Live Update) should use the flash utility included in the downloaded compressed file when doing the EC update. To avoid EC update failure, please do not use older versions of the update utility or utilities not provided by MSI.

1) To know about how to update EC Firmware under DOS mode, please click [here](#).

2) Please execute "ecall.bar" file after unpack the compressed file for upgrade EC Firmware.

NB EC Firmware

| | | | |
|-------------|--|--------------|------------|
| Description | 1. added VGA support for 180W adapter compatibility | Version | 2416 |
| Type | Firmware | Release Date | 2011-07-21 |
| OS | N/A | | |
| Download | 1761_2416.zip | File Size | 0.06 MB |
| Note | For Non-Backlight Keyboard Systems only. Backlight Keyboard is optional and may only be available in selected regions. | | |

How to flash MSI Notebook EC under DOS mode



Special Note:

The EC files provided here are exclusively for MSI products. MSI takes no responsibility for any damage caused by improper use or lack of technical expertise.

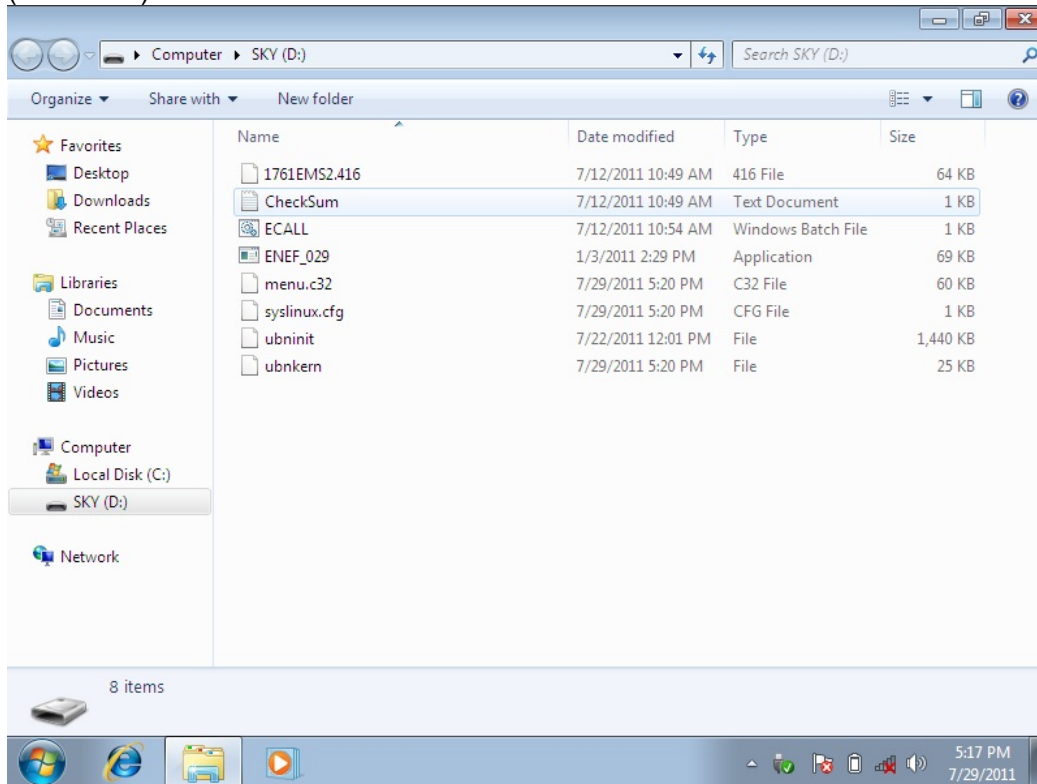


Attention:

Users who download EC from here should use the flash utility included in the downloaded compressed file when doing the EC update. To avoid EC update failure, please do not use older versions of the update utility or utilities not provided by MSI.

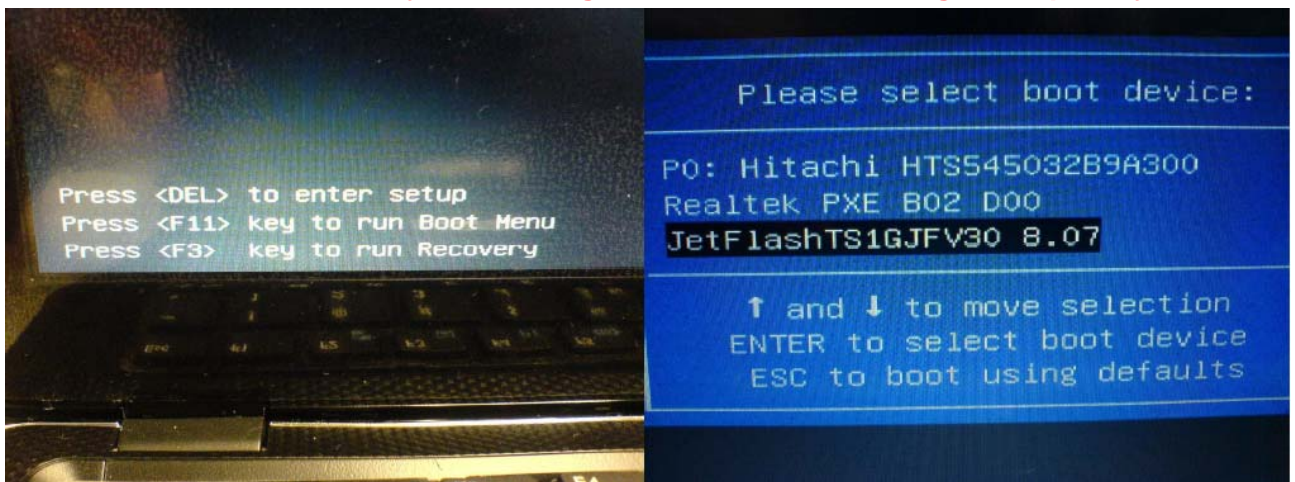
Update EC with a bootable USB flash drive (Pen drive):

1. Extract the zip file containing the EC files and flash utility to a bootable USB flash drive (Pen drive).



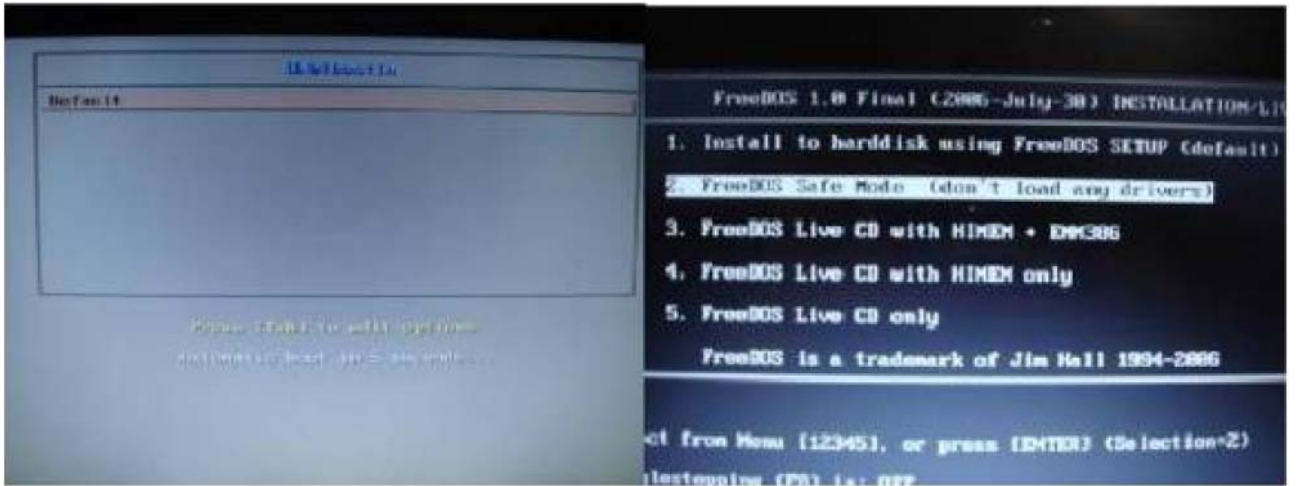
2. Insert the USB flash drive (Pen drive) in the USB port.
3. Boot up the notebook and press F11 key to run Boot menu and then to select USB flash disk drive.

Note: For some models, you need to go into the bios and change boot priority.



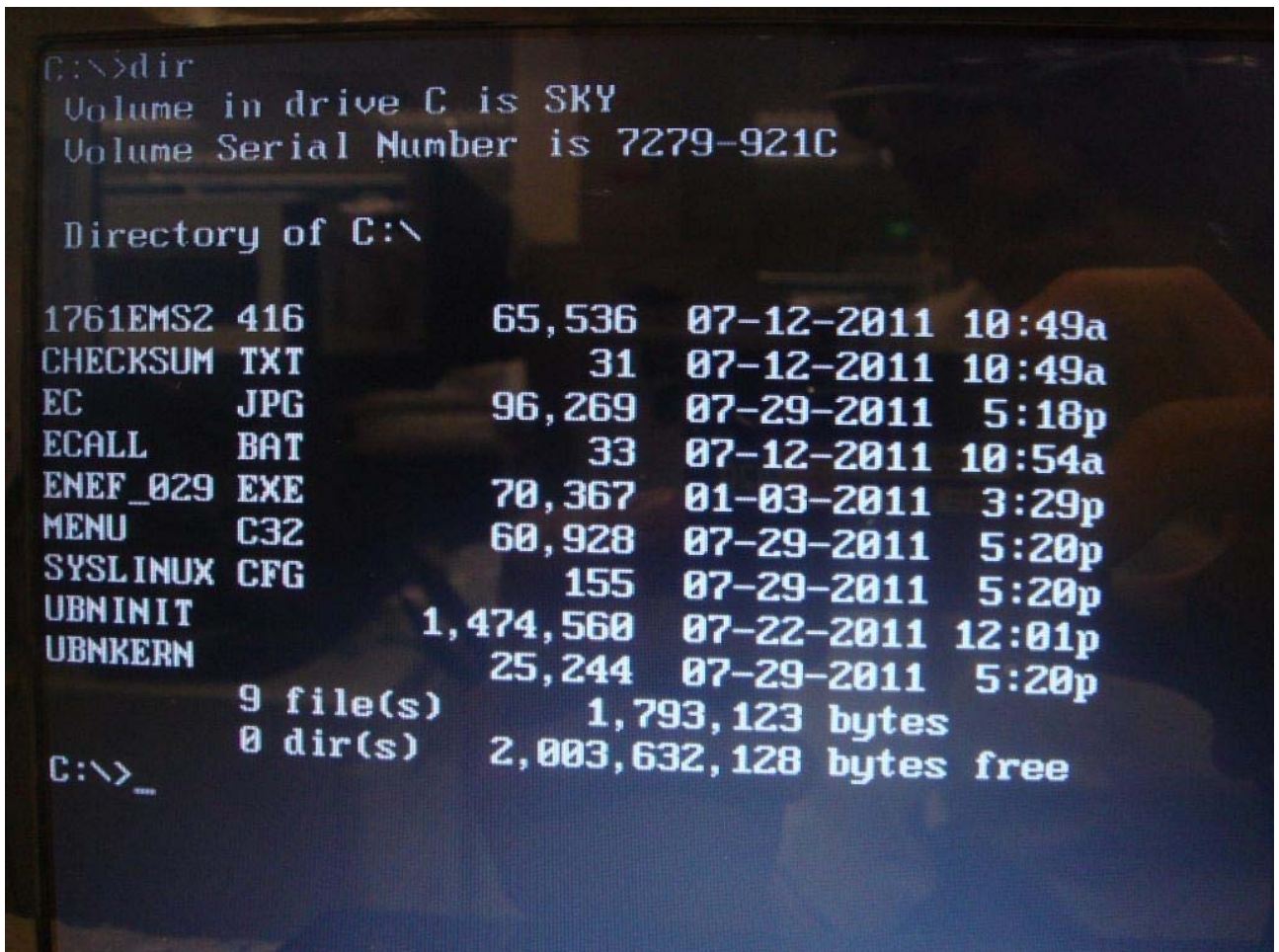
Make sure the AC adapter is firmly connected to your notebook before you run this utility.

4. Press Enter key and then to select "FreeDOS Safe Mode (don't load any drivers)".



5. Please access the correct drive. Here is an example. Type **c:** at DOS prompt A:\>, you should be able to see the files that you saved. Execute the batch file ECALL.BAT.

Note: This is only applicable for some models. For others, you can try to switch to D or E ...disk.



6. Wait for a couple of seconds to complete the EC update procedure.



DO NOT power off the notebook during this EC update process.

7. Power off the notebook after the EC update procedure is completed.

8. Remove battery pack and AC adapter.



9. Plug in battery pack or AC adapter.
10. Power on the notebook and press **** key to enter the BIOS setup menu.
11. Press "F9" key and then press **<Enter>** key to load BIOS default settings.
12. Press "F10" key and then press **<Enter>** key to save changes and exit.

